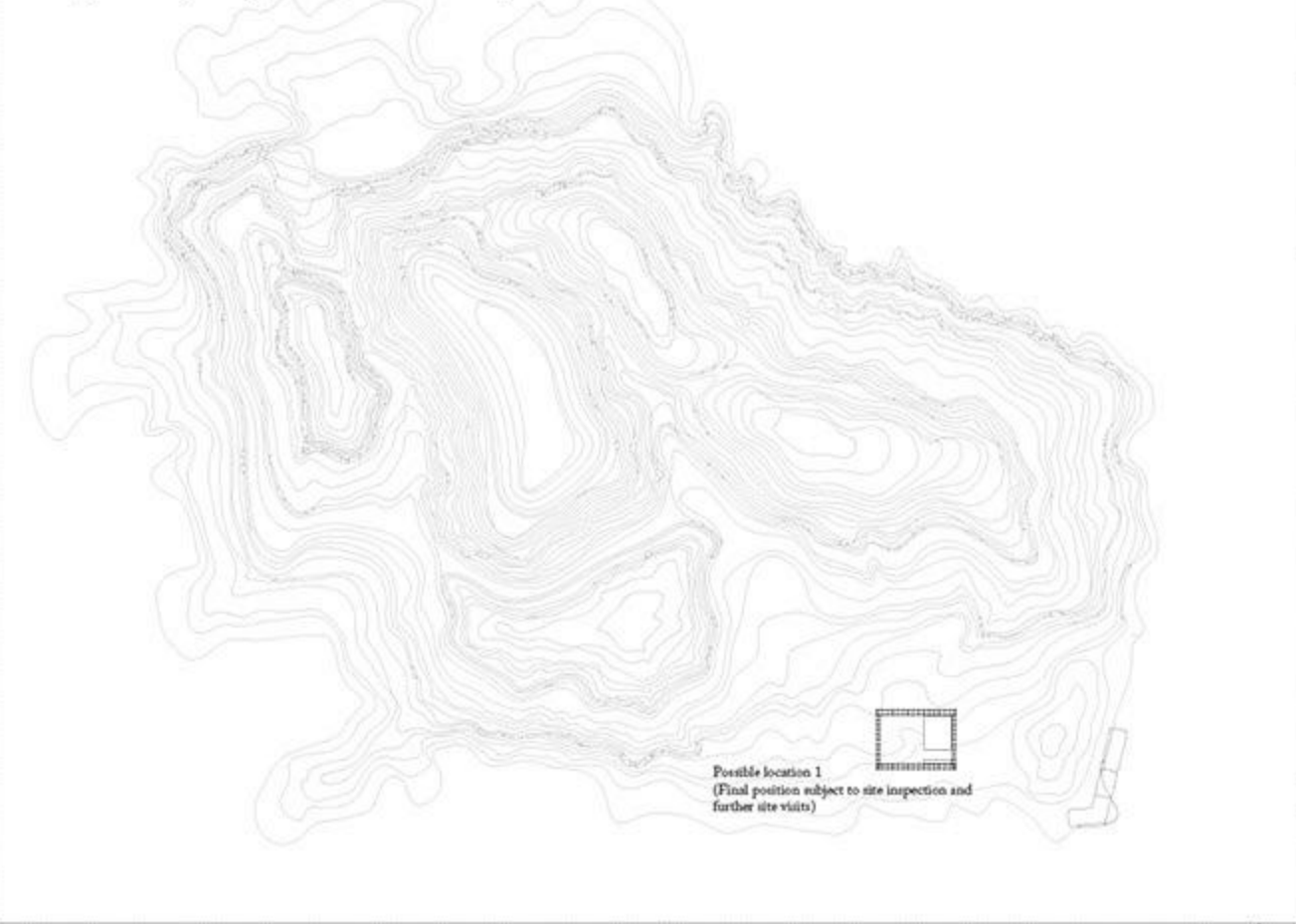
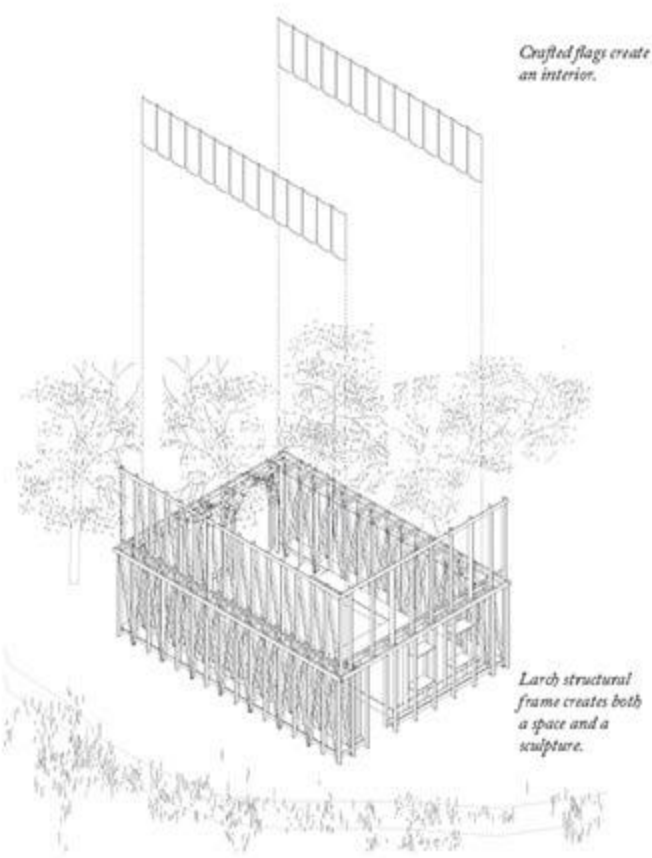


**Innesfree** \_Of Clay and Wattles decayed.



A ruinous form dedicated to WBYEATS is to be constructed on the *The Isle of Innesfree*. This powerful yet modest construction is seen as a way of recognising the surrounding significance of this humble piece of land in the surrounding landscape of Lough Gill, and the cultural landscape of which it sits. Harnessing both a domestic and chapel-like character, the constructed ruin feels true to the site of Innesfree. Pulling together the entirety of Lough Gill, a number of sites are referenced, islands of cultural and architectural significance connect their way into a single composition. Yeats' primitive requests for solitude are conjured and solemnized in the ghostly remains of this one-person dwelling.



Crafted flags create an interior.

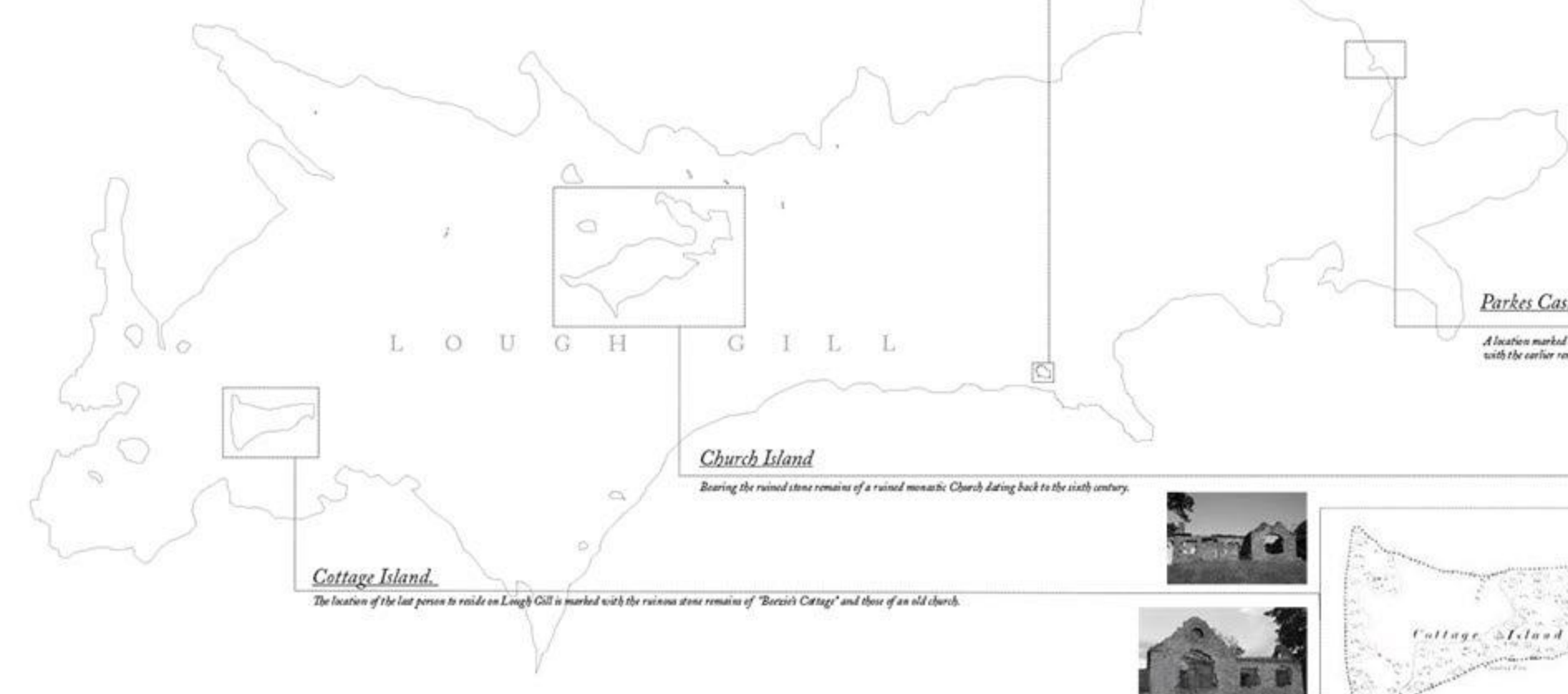
Larch structural frame creates both a space and a sculpture.



**A new public space.**

View from the ruin  
On the edge of the island, with "lake water lapping with low sounds by the shore" a new spirited public space is formed within the shell of Yeats' ruined cabin. The constructional elements are exposed and used as decorative features both inside and out. This honest expression of structure adheres to the beautiful, honourable nature of Yeats' vision of Innesfree.

A series of hand-crafted, decorative flags suggests a celebratory occupation of the ruin, this is communicated across the lake. These "Flags of the morning" sit just above the level of the lake, they are like a mist, "a purple glow" emanating into the surrounding landscape.



**Parkes Castle.**

A location marked by a ruined plantation castle of the early 17th century, with the earlier remains of a 16th century tower house.



**Church Island.**

Bearing the ruined stone remains of a ruined monastic Church dating back to the sixth century.



**Cottage Island.**

The location of the last person to reside on Lough Gill is marked with the ruinous stone remains of "Boris's Cottage" and those of an old church.



Identification Number - 15325

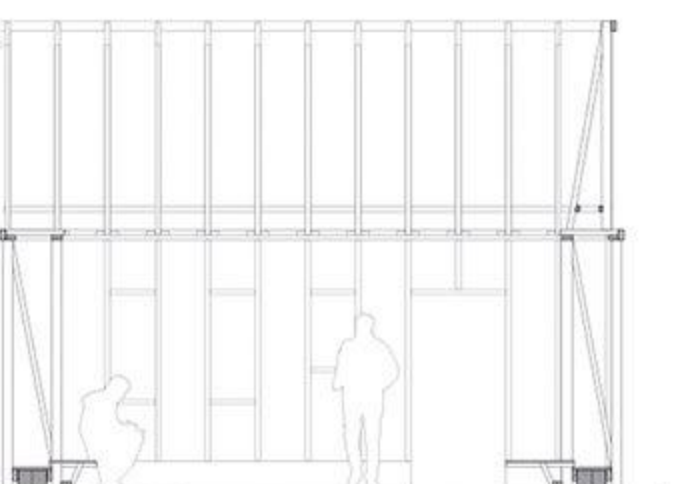


**Presence in the landscape.**

View from the lake  
An informal eye catcher in the landscape, the proposal creates a powerful ratio image across the lake. This ruinous intervention, although temporary has the strength of character to feel positively arduous, as though it has always sat within the theatrical and dramatic surroundings of Lough Gill.

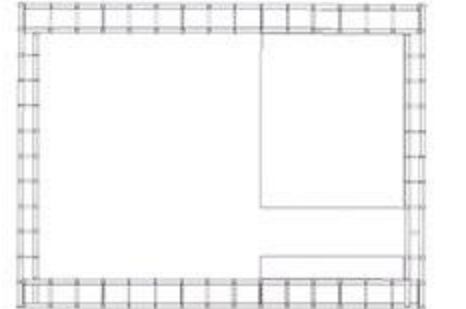
**Breathable Frame**

An intriguing precedent for the project looked at the sculptural awkwardness of this stripped back rural hut. The solid and the void have switched places. The doors provide the impenetrable barrier, whereas the walls create a breathable fabric now what is perceived as part of the interior is a joyous moment in the landscape.



Section 1:50

The architectural intention remains consistent when dealing with the construction. The choice of a simple, robust timber frame relates to Yeats' vision for a "cabin of clay and wattles made". It is a ruinous interpretation of this modest architectural ambition. It is symbolic of the remains of the cabin which Yeats built, 100 years later it is now and has become part of the landscape.



Plan and Elevation 1:100



Site Elevation 1:250

Identification Number - 15325